



Get it right!

STINGRAY[®]
AUTOMATIC POOL CLEANER



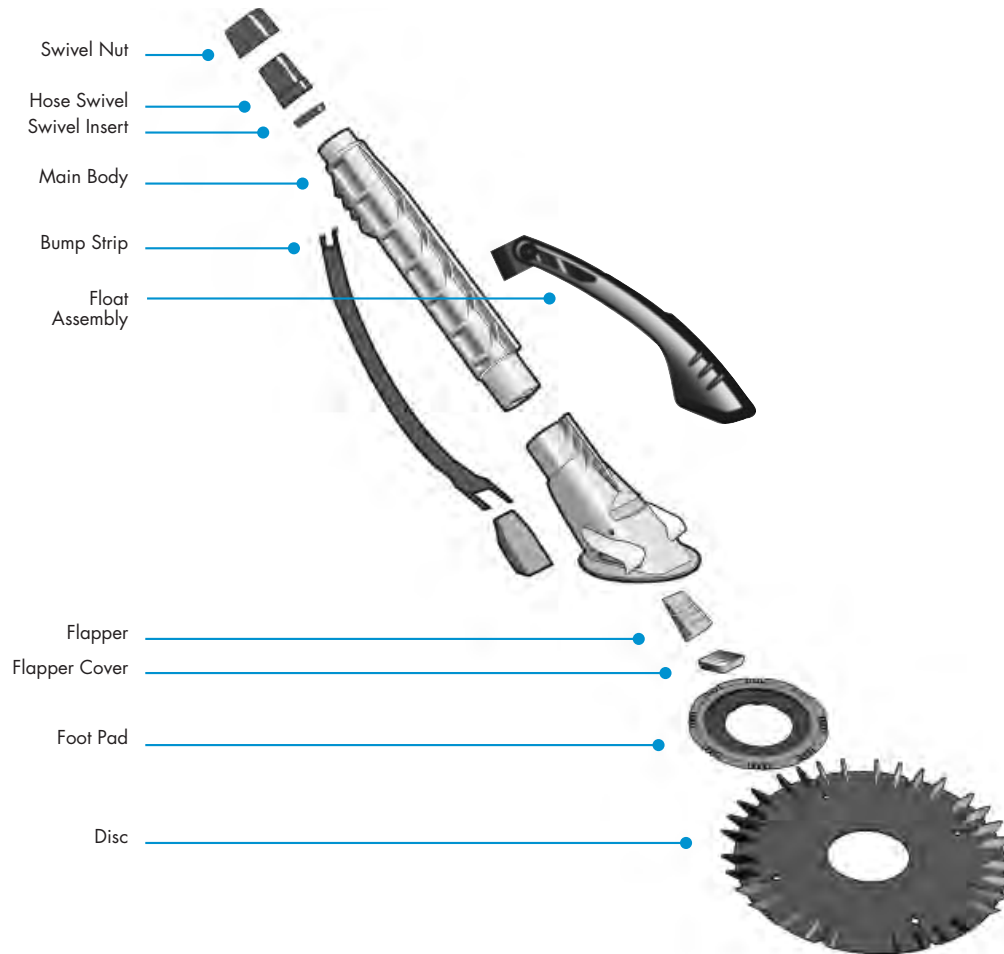
OWNERS MANUAL

CONTENTS

Components	1
Pre-installation Check List	2
Stingray Weir Valve	4
Trouble Shooting	5



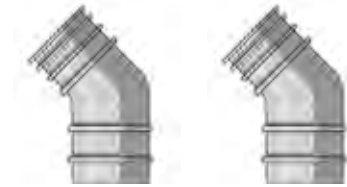
COMPONENTS



Accessories

- **45 Degree Elbows**

Use to de-stress the hose at Weir



- **The Stingray Weir / Skimmer valve**

To ensure your Stingray's optimum performance we have included a Stingray Weir Valve. This valve will immediately give you the state of your filter system. Should your filter require backwashing this will be clearly visible by observing the position of the flow indicator.



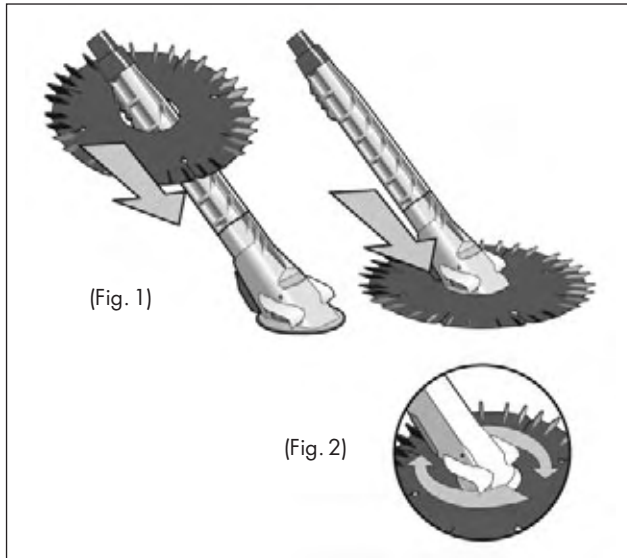
NB: If you pool's skimmer plate has an inbuilt flow regulator device, then installation of the Stingray Weir valve is not necessary.

Please note: No guarantee is given on vinyl liners when used with a Stingray Automatic Pool Cleaner

ASSEMBLY AND INSTALLATION

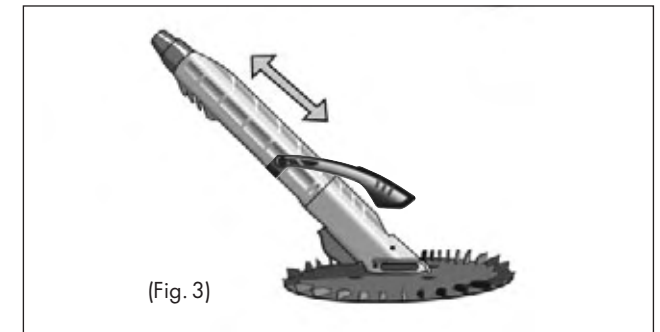
Once unpacked:

Step 1



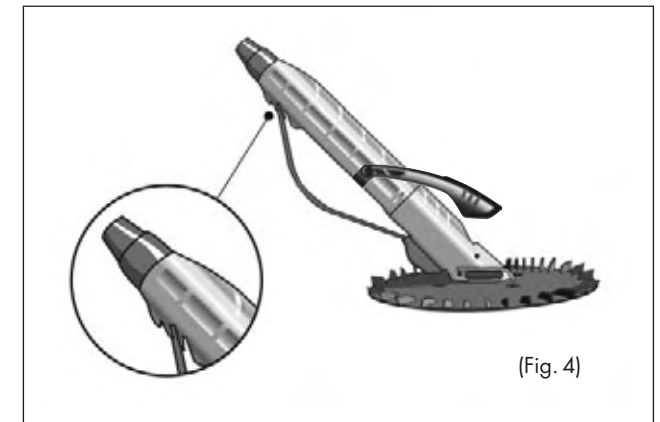
1. Attach the disc by placing the disc over the body (figure 1) and positioning it below the wings (figure 2).
2. The disc must be attached with the fins on top and the flat surface facing down. Disc is marked "Top".
3. The disc should rotate freely.

Step 2

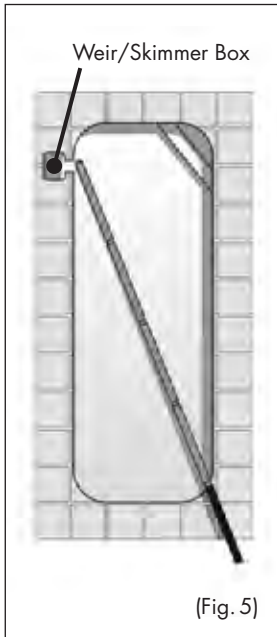


1. Slide the float assembly over the main body and clip into place – refer to components shown on page 2. (Fig. 3)

Step 3



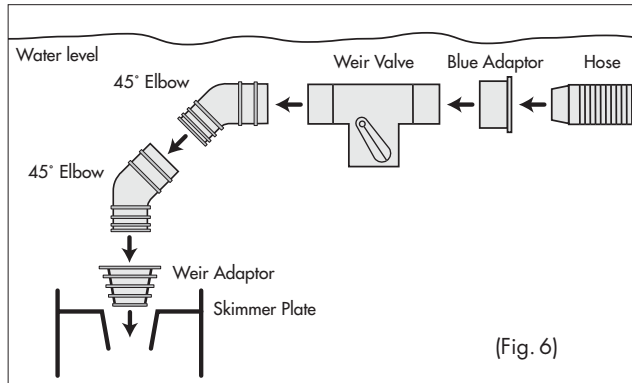
1. Insert the bump strip into the slots provided. Insert bottom end first and adjust top end according to the obstacles in your pool (figure 4).



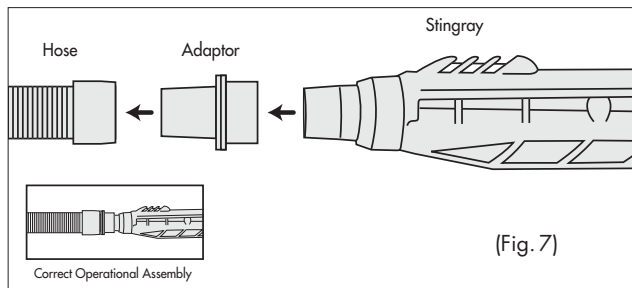
(Fig. 5)

Step 4

1. Assemble sufficient lengths of hoses to cover the distance from weir to furthest point away from the weir/skimmer box plus one extra length of hose (figure 5).
2. Remove the air from the hoses by pushing the hoses vertically into the pool.
3. Install the Weir Adaptor in the weir skimmer box inlet; connect the 2 x 45° Elbows; connect the Weir Valve and Blue Adaptor (optional) and attach the pool hoses (Fig. 6) **IMPORTANT** The Weir Valve must be fully below the water surface to operate. Refer to page 7 for more information on installing and using the Weir Valve.
4. Attach the assembled Stingray cleaner to the other end of the hose and switch on your filtration unit. (Fig. 7)



(Fig. 6)



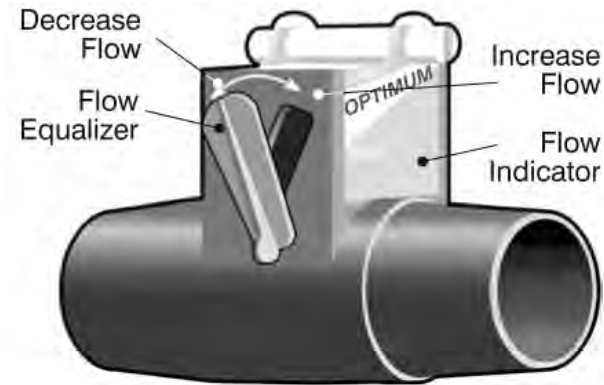
(Fig. 7)

THE STINGRAY WEIR VALVE

Installing / adjusting the Valve

The valve should be fitted to the inlet/suction in you pool weir/skimmer box.

1. Turn off the pump
2. Disconnect the pool hose from the weir box
3. Ensure the baskets contain no debris
4. Backwash the filter, with the hose removed, before installing the weir valve
5. Install the valve in the weir
6. Turn on the filtration system
7. Attach the Stingray Automatic Pool Cleaner to the correct length of hoses (refer to page 2) taking care to purge the air out of the hoses by holding the end of the first hose over the water return outlet/aim flow
8. Connect hose to weir valve
9. Close the flow equalizer
10. If the suction is too high open the flow equalizer until the flap operates between "low" and "high"



(Fig. 8)

Tip: Always follow instruction 1 & 2 when backwashing in the future.

TROUBLE SHOOTING

Problem	Probable Cause	Suggested Solution
1. Stingray does not move with the pump running	i) Hose is disconnected	SWITCH OFF PUMP i) Reconnect hose
	ii) Leaf basket is full	ii) Empty leaf basket and
	iii) Filter is not backwashed	iii) Backwash filter
	iv) Obstacle in the Flapper chamber	iv) Pull any visible obstacles out. If it does not solve the problem remove Flapper cover, remove flapper, inspect chamber and remove any obstacles, rinse. Refit flapper then flapper cover by placing the left location pins into the left holes push the right side of the flapper cover clicking the pins into their corresponding holes. Inspect the outside of the body to see if all four pins have located
	v) Hose has a hole	v) Replace section of damaged hose
	vi) Disc does not rotate freely	vi) Ensure disc is installed as outlined on page 4
2. Obstacle in Hose		i) Remove obstacles
3. Stingray is stuck in a specific place	i) Stuck in a corner or on a light fitting	i) Remove from the obstacle ii) Adjust deflector assembly lower or higher iii) Decrease suction slowly by slightly opening the flow equalizer

WARRANTY CARD



WARRANTY CARD

Name of Purchaser

Address

Purchased From

Date

Equipment and Model

IMPORTANT:

This card must be filled in and returned to Poolrite Equipment Pty. Limited within 14 days of purchase to render the Warranty effective.

AUSTRALIA

QUEENSLAND HEAD OFFICE

SALES & EXPORT BRISBANE

415 Creek Road, MT GRAVATT QLD 4122

PO Box 520, MT GRAVATT QLD 4122

Telephone: (07) 3323 6555 Facsimile: (07) 3323 6500

NEW ZEALAND

POOLRITE EQUIPMENT PTY LTD

22/761 Great South Road,

Penrose AUCKLAND New Zealand

Telephone: (09) 571 0210 Facsimile: 0800 766 574



WARRANTY CARD

POOLRITE STINGRAY AUTOMATIC POOL CLEANER

Your Poolrite Stingray cleaner is manufactured to the highest possible standards and most up-to-date technology. Accordingly the equipment carries the following warranty, should a fault occur due to faulty manufacture or materials.

IMPORTANT

In the event of a fault covered by warranty occurs, the Purchaser must in the first instance contact *POOLRITE EQUIPMENT PTY. LTD.* or the closest authorised Poolrite Distributor.

POOLRITE warrants that the Stingray Automatic Pool Cleaner will operate effectively for the specified periods subject to the following conditions:-

1. The warranty covers the Stingray Automatic Pool Cleaner unit, and the original Stingray Hoses when they are included in the initial purchase as a complete unit.
2. The warranty extends to the workmanship and materials used in the manufacture of the unit only. *POOLRITE* specifically disclaims any liability for any consequential loss or damage which may result from the use of the Stingray Automatic Pool Cleaner, such as (without limitation) vinyl liners.
3. The Poolrite Automatic Pool Cleaner is warranted against manufacturing defects only for a period of 2 years (24 months) from date of purchase, in which event *POOLRITE* shall, at its sole option, either repair or replace such damaged units delivered to *POOLRITE* or its authorised distributor.
4. The original Stingray Hoses are warranted against manufacturing defects only for a period of 1 year (12 months) from the date of purchase, in which event *POOLRITE* shall, at its sole option, either repair or replace such damaged hoses delivered to *POOLRITE* or its authorised distributor.

5. This warranty extends only to:

- (i) the original purchaser.
- (ii) within the borders of Australia and New Zealand.
- (iii) Stingray Automatic Pool Cleaners that are installed and maintained strictly in accordance with *POOLRITE'S* instructions, and/or installed by agents duly authorised by *POOLRITE* without alterations or modifications of any nature whatsoever.
- (iv) The Stingray Automatic Pool Cleaner returned to the distributor from which it was purchased or to *POOLRITE* at the purchaser's expense.

6. This warranty excludes:

- (i) Malfunction in the unit if genuine Stingray Hoses are not used.
- (ii) Damage arising from abnormal use, lack of care, extreme exposure to the elements or chemicals or factors beyond the control of *POOLRITE*.
- (iii) The *POOLRITE* warranty supercedes all other warranties whether expressed or implied.

POOLRITE accepts no responsibility for loss, damage or injury to person or property arising from warranty failure of equipment, or installation of that equipment.

Unless with the express authority of *POOLRITE* any repair or replacement shall be provided only by *POOLRITE* or its authorised Distributors and this warranty shall not extend to any expenditure otherwise incurred.



Get it right!

AUSTRALIA

HEAD OFFICE – QLD: 415 Creek Road MT GRAVATT 4122
Telephone: (07) 3323 6555, Fax: (07) 3323 6500

Nth QLD: 36 Hugh Ryan Drive GARBUTT 4814
Telephone: (07) 4779 4880, Fax: (07) 4779 6714

NSW: 6 Forsyth Close WETHERILL PARK 2164
Telephone: (02) 9729 0166, Fax: (02) 9729 2759

VIC: 1 Endeavour Way BRAESIDE 3195
Telephone: (03) 9588 1770, Fax: (03) 9588 1779

WA: 16 Ledger Road BALCATT 6021
Telephone: (08) 9344 3871, Fax: (08) 9345 3923

NEW ZEALAND

22/761 Great South Road, Penrose AUCKLAND
Telephone (09) 571 0210, Fax: 0800 766 574

Poolrite Equipment Pty Ltd ABN 11 001 674 004 Website: www.poolrite.com.au Email: info@poolrite.com.au

Manufacturer reserves the right to alter specifications without notice.

PLR/196 (08/05)